



Bowmans Close, Burnham, Buckinghamshire SL1 8LH

Bowmans Close, Burnham, Buckinghamshire SL1 8LH

£3300pcm Unfurnished

- DETACHED SPACIOUS HOUSE
- 5 BEDROOMS
- BEAUTIFUL VIEWS OVER FIELDS FROM REAR
- 3 RECEPTION ROOMS
- AVAILABLE 1ST MARCH
- ONE PET CONSIDERED

We are delighted to offer this spacious five bedroom detached family house with stunning external views from the rear gardens over beautiful open countryside. Available immediately. Re-decorated throughout in February 2023. One Pet Considered. Unfurnished. Comprising: Three reception rooms, kitchen/breakfast room, cloakroom, utility room, five bedrooms, three bathrooms. Double garage and parking.

Mature and established private gardens front and rear. Situated in a highly sought after cul de sac location to the North of the village, whilst only 0.6 miles from Burnham High Street.

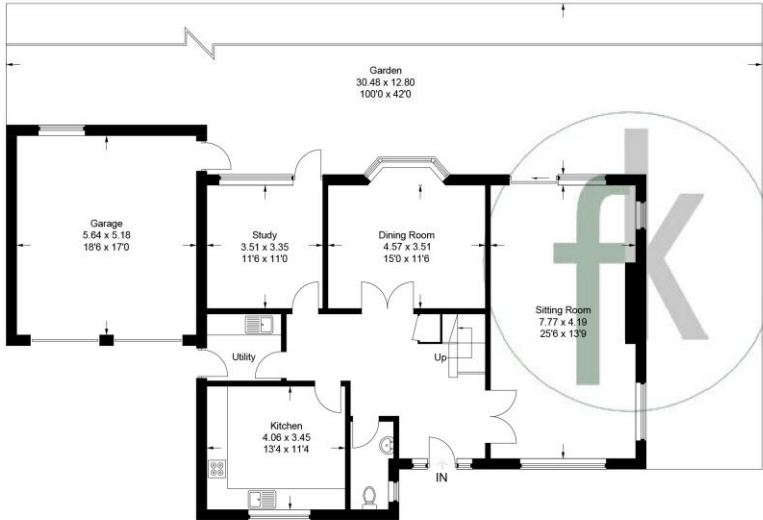
The surrounding area provides excellent schooling for children of all ages both in the private and state sector, the state sector still being run on the popular grammar school system. Sporting/leisure facilities abound in the area with many notable golf courses, riding and walking in Burnham Beeches. Cliveden, the famous National Trust property is nearby and there are numerous sports clubs including tennis, rugby and football, various fitness centres and racing at Ascot and Windsor. The River Thames, Jubilee River and Dorney Lake are within easy reach, being less than two miles away. Note alarm not included



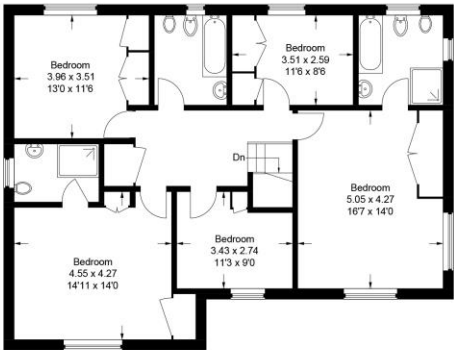
BOWMANS CLOSE, BURNHAM, BUCKINGHAMSHIRE SL1 8LH EPC

10 Bowmans Close

Approximate Gross Internal Area
Ground Floor = 105.2 sq m / 1,132 sq ft
First Floor = 103.7 sq m / 1,116 sq ft
Garage = 29.5 sq m / 317 sq ft
Total = 238.4 sq m / 2,565 sq ft

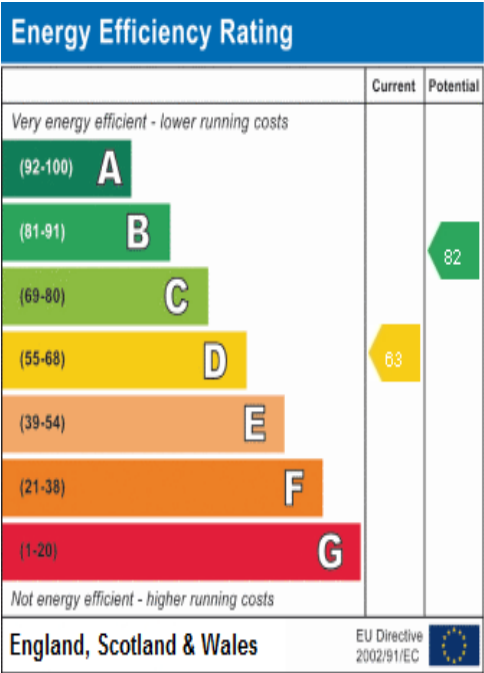


Ground Floor



First Floor

This plan is for layout guidance only. Not drawn to scale unless stated. Windows and door openings are approximate. Whilst every care is taken in the preparation of this plan, please check all dimensions, shapes and compass bearings before making any decisions reliant upon them.
© C.J Property Marketing Ltd



2/3 Robin Parade, The Broadway,
Farnham Common, Buckinghamshire SL2 3QL
Tel: 01753 643222

